

BLUE

Using the toilet's half flush doesn't actually save much water
True / False

3

FALSE

Older toilets use up to 18L/flush.
Duel flush toilets use 4.5L/full flush & only 3L /half flush!

Washing dishes in the sink is always better than using a dishwasher
True / False

4

FALSE

As long as you have a water efficient dishwasher & fill it right up, it is actually the better water saving option



RED

5

Wash fruit & veg:
A) under a running tap
B) in a filled-up sink or bucket

B

Only fill the sink or bucket with as much as you need, and reuse the water on your plants!

Keep your shower to:
A) 30 seconds
B) 4 minutes
C) 8 minutes

2

B

Keep showers to 4mins or less.
The perfect length to sing your fave song while washing!

Are you a Water Whiz?

connected.pmhc.nsw.gov.au

ConnectEd PMH



Stick to watering in the cooler parts of the day so your plants get maximum benefit from your efforts

B

The best time to water the garden is
A) Middle of the day
B) Morning or evening

9

Not only does fixing a leak save our precious water, but it saves energy & money, too!

C

Fixing a leaking tap can save up to:
A) 800L / Yr
B) 8000L / Yr
C) 12000L / Yr

GREEN



Which washing machine uses less water?
A) front loader
B) top loader

1

A

Front loaders use up to 70% less water & are also more energy efficient

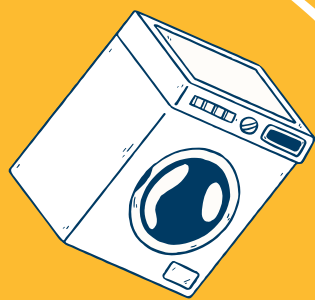
If that's not possible, check if your machine has half load, and opt-out of extra rinse cycle

TRUE

8

It's best to wait for a full load before using the washing machine
True / False

YELLOW



Folding Instructions



-
-
-
-
-
-
-
-

For more fun games & activities, visit:
connected.pmhc.nsw.gov.au/kids

Game instructions

- Put your fingers / thumbs under the outside squares
- Ask a friend to pick one of the outer colours
- Open and close the chatterbox in opposite directions to spell the colour
- Ask your friend to choose a number on the inner section
- Open and close the chatterbox in opposite directions to the count of the number chosen
- Ask your friend to choose a number again
- Read out the question and ask them to answer
- Open the question flap to check the answer